

House and land package.



House and Land Package from \$367,372*

Address: Lot 714 White Gum Way, Yorkdale (484sqm)

Inclusions:

- + Auto lift roller door to Garage
- + Westinghouse 600mm Kitchen Appliances
- + Flick Mixer tapware throughout
- + Carpet & Tiled flooring throughout
- + Dishlex stainless steel dishwasher
- + Concrete driveway including crossover
- + H1 Waffle Pod Slab Included

Nova 170- Express Series



Give us a call or drop in for a chat today.

Office:

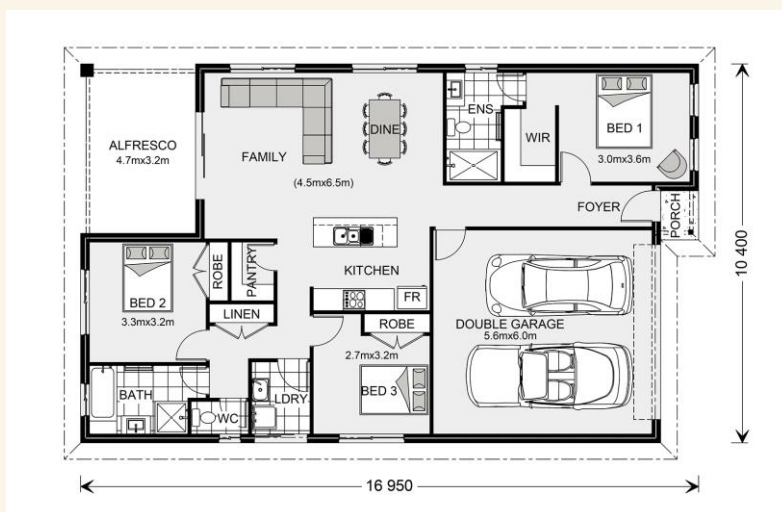
1/1021 Sturt Street
Ballarat Vic 3350

Gina Petrascu

Call: 0427 220 569

Email: ballarat@gjgardner.com.au

Or visit gjgardner.com.au



*Images and photographs may depict fixtures, finishes and features either not supplied by G.J. Gardner Homes or not included in any price stated. These items include furniture, swimming pools, pool decks, fences, landscaping - including planter boxes, retaining walls, water features, pergolas, screens and decorative landscaping items such as fencing and outdoor kitchens and barbeques. For detailed home pricing, please talk to a new homes consultant.

Ballarat Regional Developments (CDB-U50435) business name G.J. Gardner Homes Ballarat

Welcome **home.**

G.J. Gardner. HOMES